



RoHS compliant

Embedded Serial Server - Single Port Built-in Module

■ ■ SE1001T

- Mini size with TTL interface
- Watch Dog Timer: 1.34 sec. auto reset
- Provide 4 channel logic I/O, 3.3V/5V max. (programmable for AP)
- Jumper to enable/disable AP firmware
- Jumper to select RS-232 console mode
- COM/LAN/RUN LED indication pin
- Configuration: Web Server Page/Serial Console/Telnet Console
- Windows based utility for IP configuration
- Upgrade firmware from remote-PC via Ethernet

The Embedded Serial Server SE1001T is a gateway between Ethernet (TCP/IP) and serial signal communications. It can be built into any facilities or equipments, and converts any serial port to Ethernet network.

By encapsulating serial data and transporting it over Ethernet, SE1001T allows bi-directional data transmission to be transparent between serial port and Ethernet. By using this unit, limited distance, point-to-point, direct serial connections can now be extended to the facility or equipment.

In the industrial and manufacturing automation, SE1001T can be embedded into most field devices, including PLCs, HMIs, Barcode Scanners, Data Terminals, Electronic Kanbans, UPS, Electronic Meters and Controllers Automation Devices. These devices will soon be linked to the network.

Existing Windows-based applications can access serial-Ethernet devices by using Atop Virtual COM software which creates virtual serial ports on the host computer mapping to the remote Serial Server over Ethernet.

Flexible configuration options allow the unit to be setup remotely over Ethernet by Telnet, web browser, or other windows utilities. It is not only a transparent, cost-effective, network-enabled serial device, but also it is easy to install.

Single Port Built-in Module



Specifications	
System	
CPU	16-bit x86 Embedded CPU
Flash	512 KBytes
RAM	512 KBytes SDRAM
EEPROM	512 Bytes
Watchdog	ASIC Hardware built-in
Ethernet	
Compliance	IEEE802.3
Port	1-port
Transmission Rate	10/100Mbps Auto-detection
Connector	2.54 pitch pin array
Auto MDI/MDI-X	No
Link Mode	
TCP Server	Single connection or Virtual Com mode
TCP Client	Single destination
UDP	Single destination
Serial	
Interface	3.3V TTL
Ports	1-port
Baud Rate	1200bps~230Kbps
Parity	None, Odd, Even, Mark, Space
Data Bits	7, 8
Stop Bits	1, 2
Flow Control	None, Software: Xon/Xoff, Hardware: RTS/CTS
Connector	2.54 pitch pin array
Protection	15KV ESD
Power	
Input	DC 3.3V (Optional DC 5V)
Consumption	Max. 1.5W
Environment	
Operating	0°C ~ 60°C (32° ~ 140°F)
Storage	-40° ~ 85°C (-40°~ 185°F), 5 ~ 95%RH
Dimension	
W x H	45mm x 36mm
Software	
Configuration	Web Page / Telnet / Serial console / Windows utility
Support Protocol	ICMP, TCP(UDP) / IP, DHCP client, SNMP, SMTP, HTTP, Telnet
Ordering Information	
SE1001T	1-port, Board-level, TTL interface, Pin-header array

Connectors Pin Assignments

Serial Port pin assignment

1. J1

PIN Index	Pin Assignment
1	COM_TX0
2	COM_TX1
3	BUZZER
4	DEFAULT KEY
5	AP_RESET
6	CONSOLE
7	LED COM
8	COM_TTYPE
9	COM_RX0
10	FG GND

Note: These pin COM_TTYPE, COM_RX0, COM_TX0 and COM_TX1 can be control RS485 direction, see reference designed.

2. JP2: RS232/ LAN

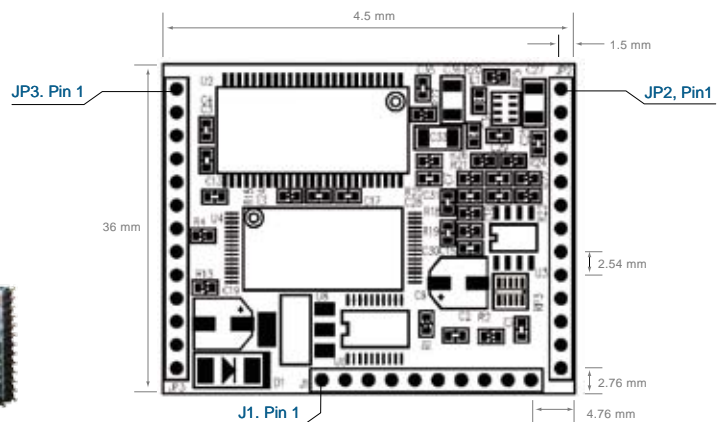
PIN Index	Pin Assignment
1	LAN1_TX+
2	LAN1_TX-
3	LAN1_RX+
4	LAN1_RX-
5	LED LAN (10 Mbps)
6	TxD0
7	RxD0
8	RTS0
9	CTS0
10	RESET
11	GND
12	GND
13	TxD1

3. JP3: RS232/ GPIO

PIN Index	Pin Assignment
1	GPIO1
2	GPIO2
3	GPIO3
4	GPIO4
5	LED LAN (100 Mbps)
6	DCD0
7	DSR0
8	DTR0
9	GND
10	LED RUN
11	+ 3.3V/+5V
12	+ 3.3V/+5V
13	RxD1



SE1001T Evaluation Board



SE1001T